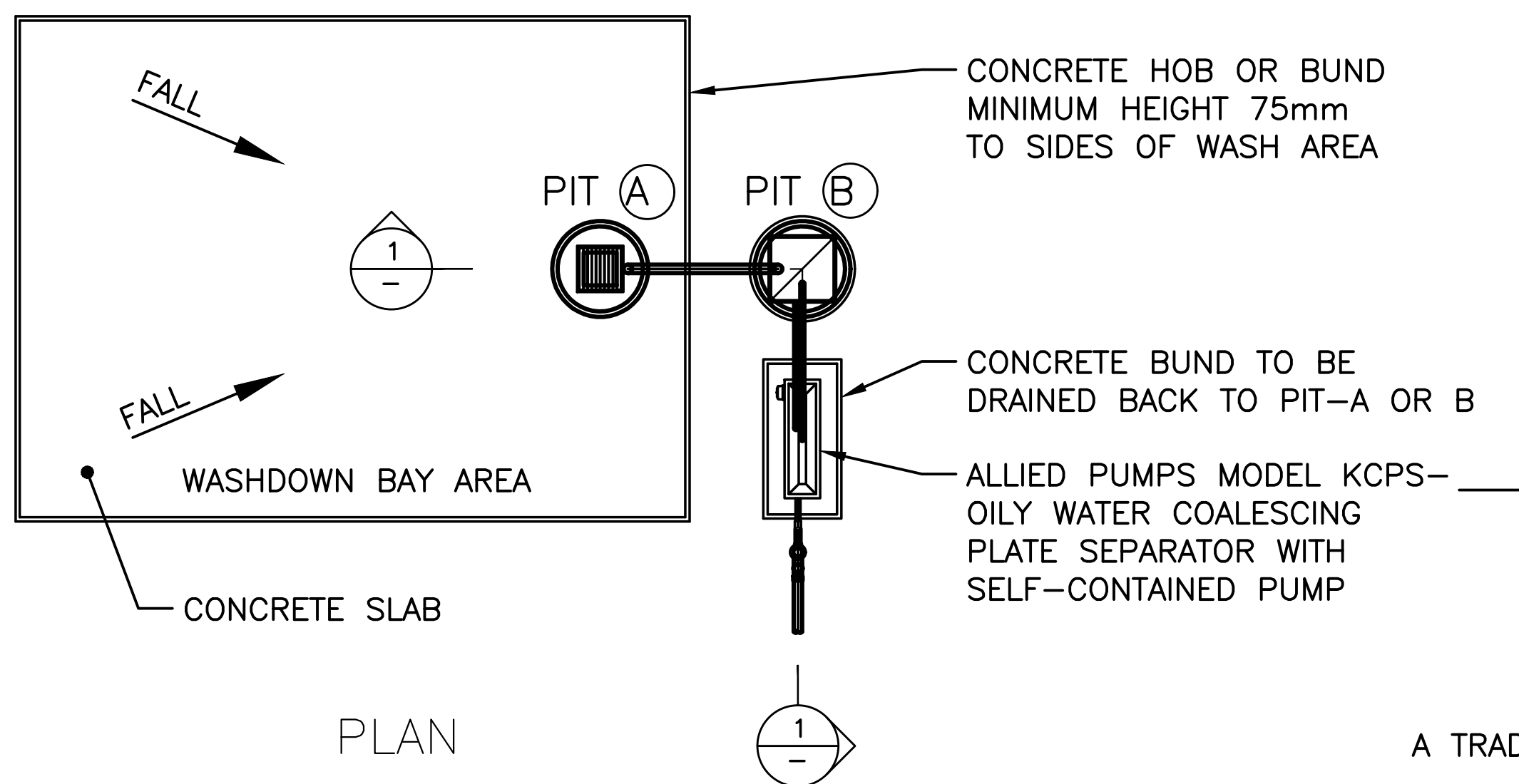


* RECOMMENDED EFFECTIVE CAPACITY OF PUMPOUT CHAMBER TO BE 75% OF NOMINAL HOURLY CAPACITY OF SEPARATOR AND IN ANY CASE NOT LESS THAN 900 LITRES.

* CONDUIT & WIRING OF FLOATS BACK TO ALLIED PUMPS CONTROLLER ON-SITE (BY OTHERS)

SECTION 1



ITEMS OF EQUIPMENT IN PACKAGE

- (A) ALLIED PUMPS COALESCING PLATE SEPARATOR KCPS-___ WITH HOT DIP GALVANISED FRAME.
- (B) ALLIED PUMPS DIAPHRAGM PUMP DS-___ MOUNTED AND PRE-PLUMBED TO SEPARATOR AND PRE-WIRED TO CONTROLLER.
- (C) ALLIED PUMPS CONTROL PANEL & 2 FLOAT REGULATORS.
- (D) WASTE OIL DRUM.
- (E) ALLIED PUMPS SUCTION STRAINER.
- (F) OPERATION & MAINTENANCE MANUAL.

INSTALLATION DETAIL

- (A) WASH BAY SIZE: _____
- (B) PIT-A SIZE: _____
- (C) PIT-B SIZE: _____

EQUIPMENT SIZING

- (A) SEPARATOR MODEL KCPS-___ FS
- (B) NOMINAL FLOWRATE-___ L/hr
- (C) PUMP MODEL DS-___

TYPICAL SCHEMATIC LAYOUT ONLY

A TRADE WASTE APPLICATION MUST BE SUBMITTED TO WATER CORPORATION PRIOR TO COMMENCEMENT OF INSTALLATION

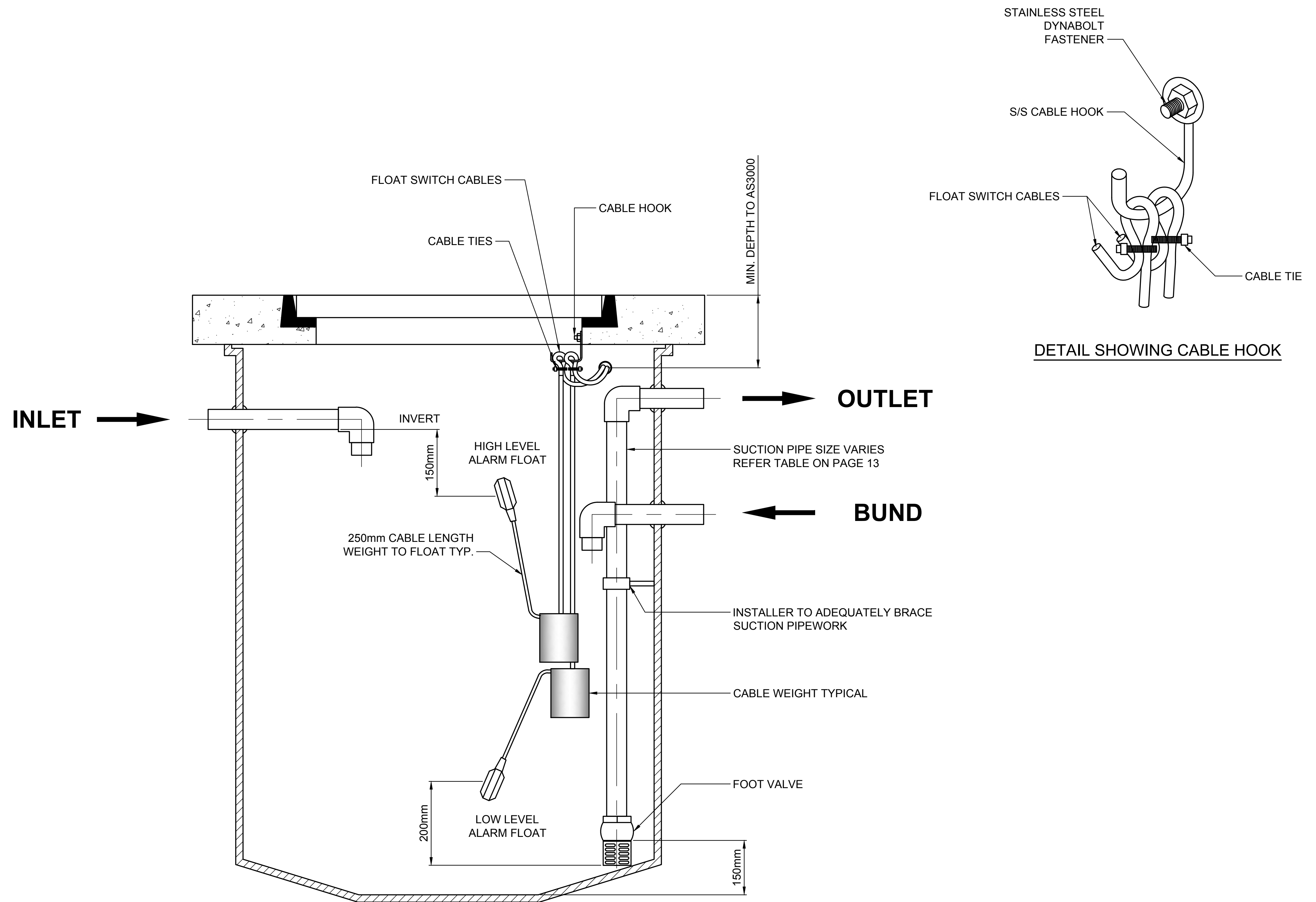
REV	DESCRIPTION	BY	DATE	CHK	DATE	APP	DATE	REFERENCE
D	TUN-DISH RELOCATED INSIDE THE BUND	MBC	05.07.18	TS	05.07.18	LAS	05.07.18	.
C	PROVISION OF TUN-DISH ON DISCHARGE	MBC	14.06.18	TS	14.06.18	LAS	14.06.18	.
B	NEW TEMPLATE ADDED	CLP	02.10.14	LAS	02.10.14	LAS	02.10.14	.
A	INITIAL DRAFTING & ANNOTATION	PJJ	01.06.04	JWS	01.06.04	GJS	01.06.04	.

Specialists in Package Pumping Solutions

2 Modal Crescent (Cnr Baile Rd)
Canning Vale, WA 6155
+61 (08) 9350 1000
www.alliedpumps.com.au

COPYRIGHT. THIS DRAWING AND DESIGN MUST NOT BE COPIED IN WHOLE OR IN PART WITHOUT THE WRITTEN CONSENT OF ALLIED PUMPS AND AS REPRODUCED MUST CARRY ALLIED PUMPS DESIGNATION.

CLIENT.	ALLIED PUMPS	TITLE.	ALLIED PUMPS COALESCING PLATE OILY WATER SEPARATOR SYSTEM
PROJECT.	DRAFTED ORIGINAL FACTORY DRAWING	GENERAL ARRANGEMENT	
SHEET SIZE.	A1	SCALE.	NTS
INTERNAL DOC CONTROL	xxxx	PROJECT DRG. No.	KCPS-15FS-OWS-01
REVISION.	D	REVISION.	D



REV	DESCRIPTION	BY	DATE	CHK	DATE	APP	DATE	REFERENCE
B	ADDED RETURN LINE BACK TO PIT	CLP	13.03.17	LAS	13.03.17	LAS	13.03.17	.
A	ISSUED FOR APPROVAL							.



Specialists in Package Pumping Solutions

2 Modal Crescent (Cnr Baile Rd)
Canning Vale, WA 6155
+61 (08) 9350 1000
www.alliedpumps.com.au

COPYRIGHT. THIS DRAWING AND DESIGN MUST NOT BE COPIED IN WHOLE OR IN PART WITHOUT THE WRITTEN CONSENT OF ALLIED PUMPS AND AS REPRODUCED MUST CARRY ALLIED PUMPS DESIGNATION.

CLIENT.	ALLIED PUMPS
PROJECT.	DRAFTED ORIGINAL FACTORY SHOP DRAWING
SHEET SIZE.	A1
SCALE.	NTS

TITLE.	PUMP OUT CHAMBER SUCTION AND LEVEL REGULATOR INSTALLATION DETAIL		
INTERNAL DOC CONTROL	PROJECT DRG. No.	APBGHP-01	REVISION.
			B